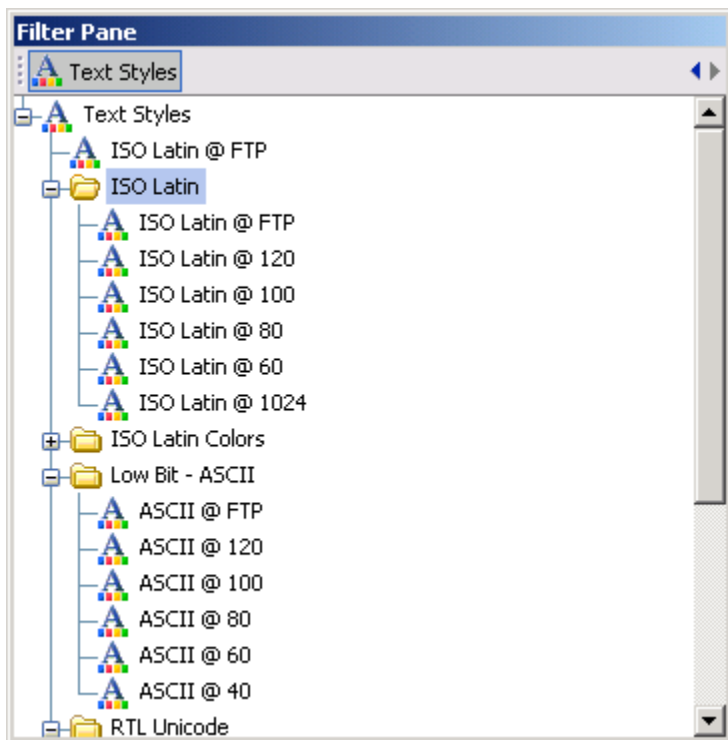


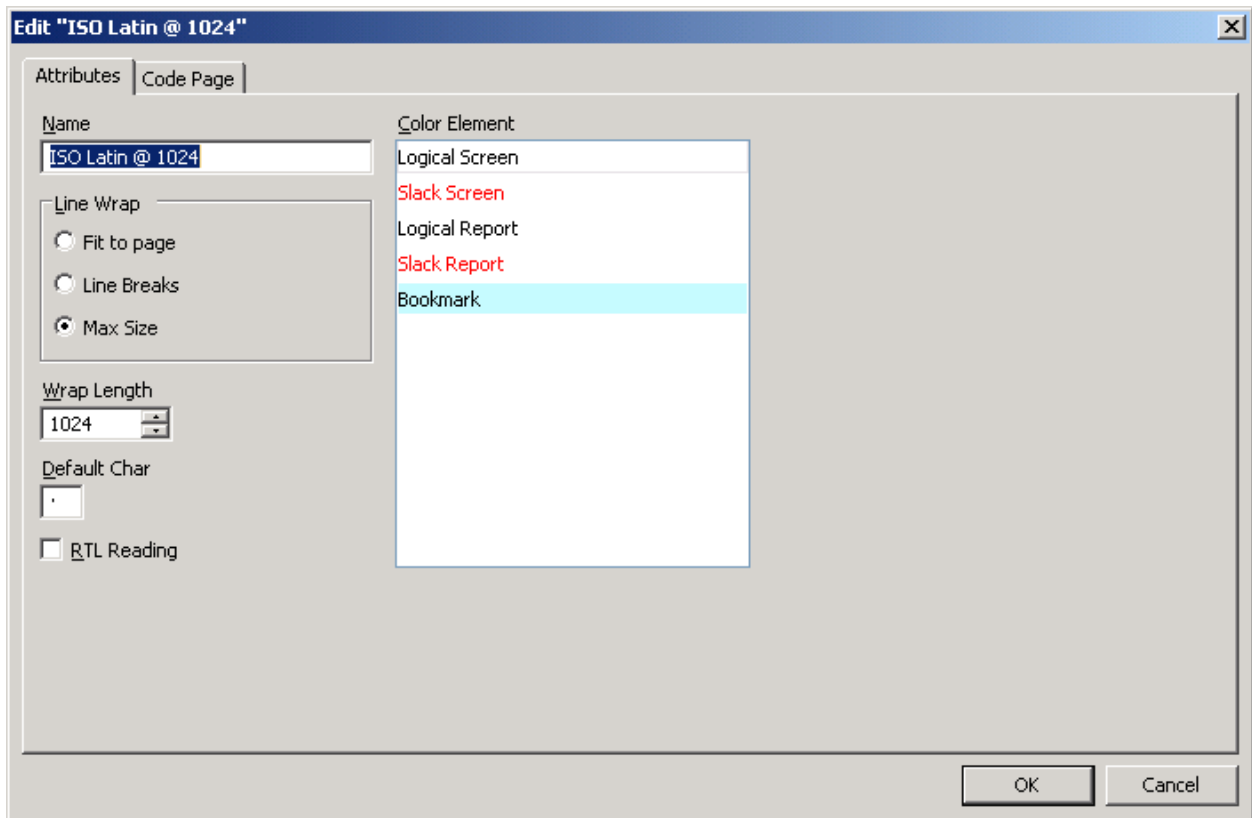
Viewing the MFT in EnCase

To view the MFT in EnCase in the most efficient manner, you should view it in a 1024 text style. The steps below show how to do this:

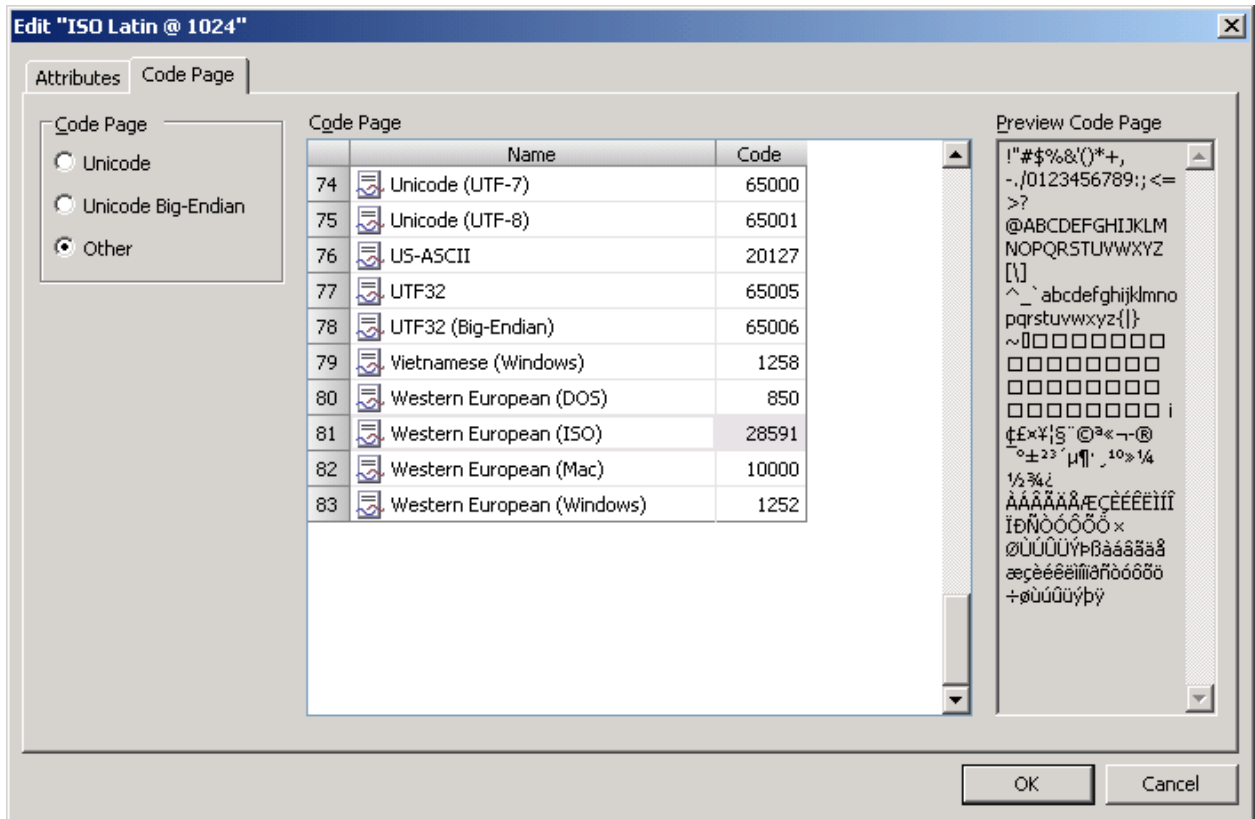
- 1) Create a new text style go to the “Text Style” panel, right click and select “new”. This has been called ISO Latin @1024. The name does name



- 2) Once in the Text Style "Attributes" section, do the following:
 - a. Enter the Name of the style. The name is only for reference, and does not affect the view itself.
 - b. Set the Line Wrap to Max Size
 - c. Set the Wrap length to 1024
 - d. Then select the "Code Page"



- 3) In the code page select Western European ISO. Then press OK.



4) Then view the \$MFT in text, and all the MFT headers should line up correctly

